

**Resource**



**PEOPLE WITH LIVED EXPERIENCE INSTITUTE**  
BECAUSE PEOPLE MATTER  
[www.pleinstitute.org](http://www.pleinstitute.org)

# **People with Lived Experience Conceptual framework for engaging people with lived experience for systems transformation**

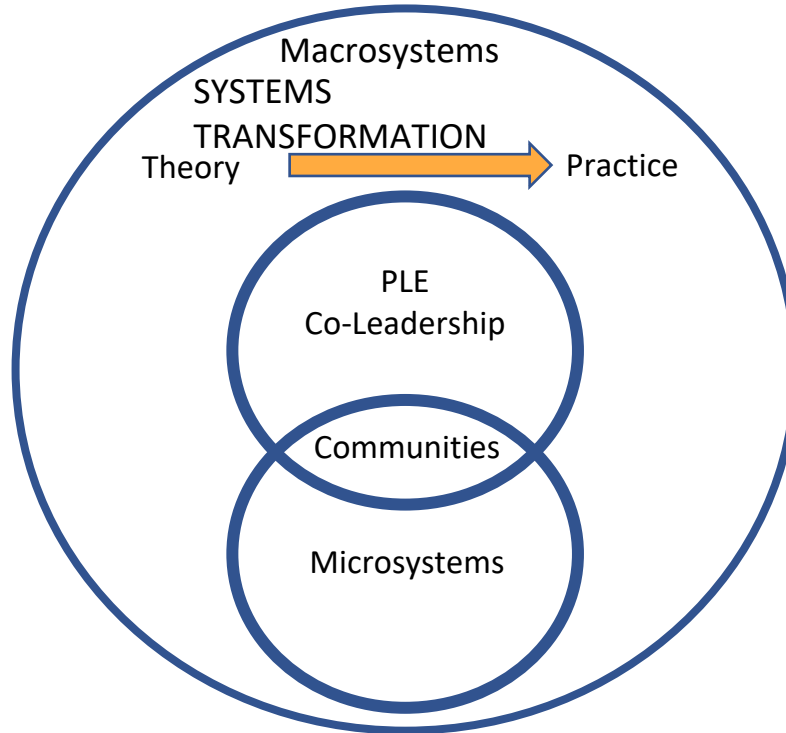
Citation: Rumala B.B., Coleman S.E., and Roary Y. (2020). People with Lived Experience Conceptual framework for engaging people with lived experience for systems transformation. People with Lived Experience Institute.

[www.pleinstitute.org](http://www.pleinstitute.org)



PEOPLE WITH LIVED EXPERIENCE INSTITUTE  
BECAUSE PEOPLE MATTER  
www.pleinstitute.org

## PLE Conceptual framework for engaging people with lived experience for systems transformation



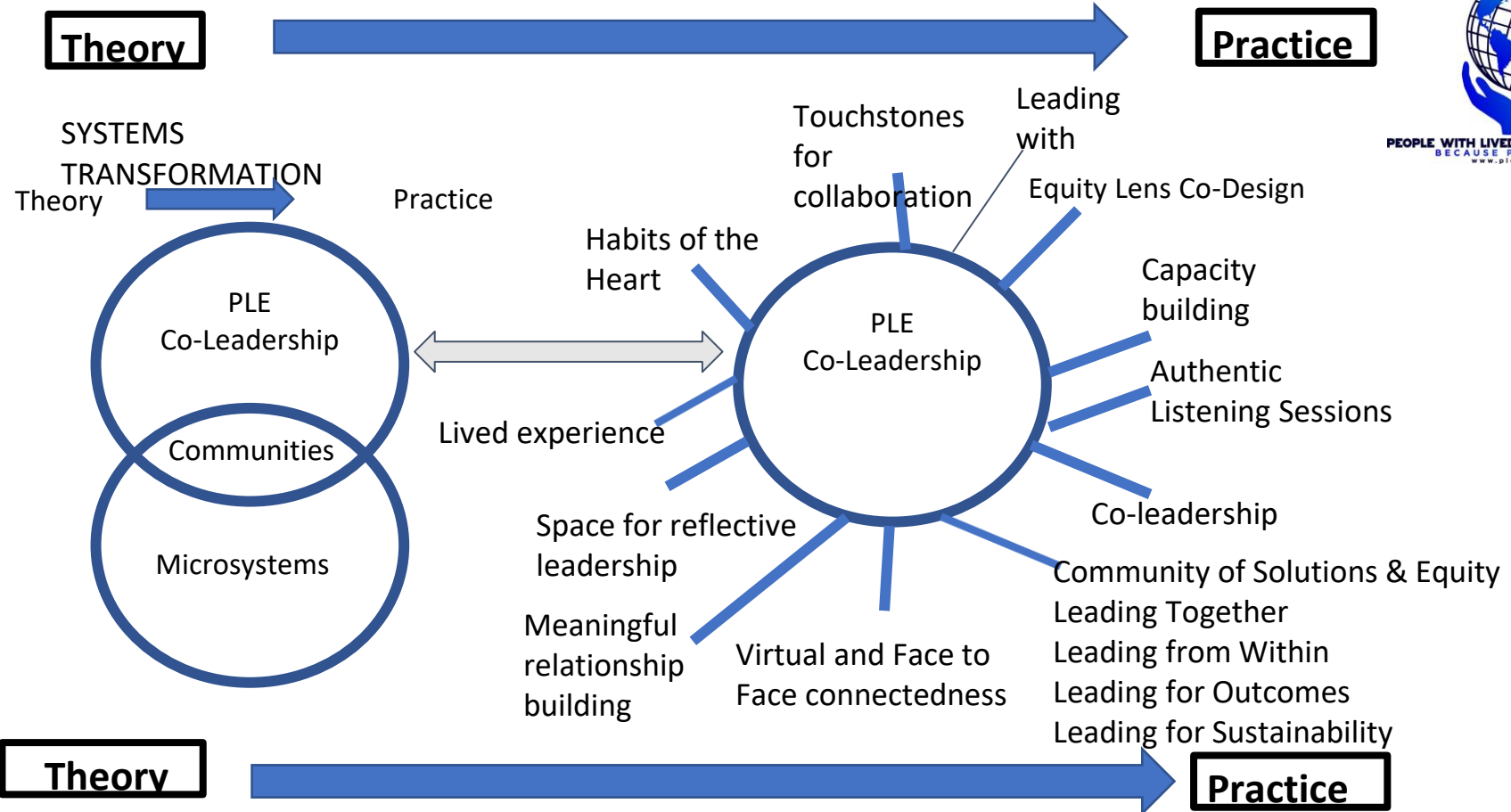
**Citation: Rumala B.B., Coleman S.E., and Roary Y. (2020). People with Lived Experience Conceptual framework for engaging people with lived experience for systems transformation. People with Lived Experience Institute.**

[www.pleinstitute.org](http://www.pleinstitute.org)

# PLE Conceptual framework for engaging people with lived experience for systems transformation

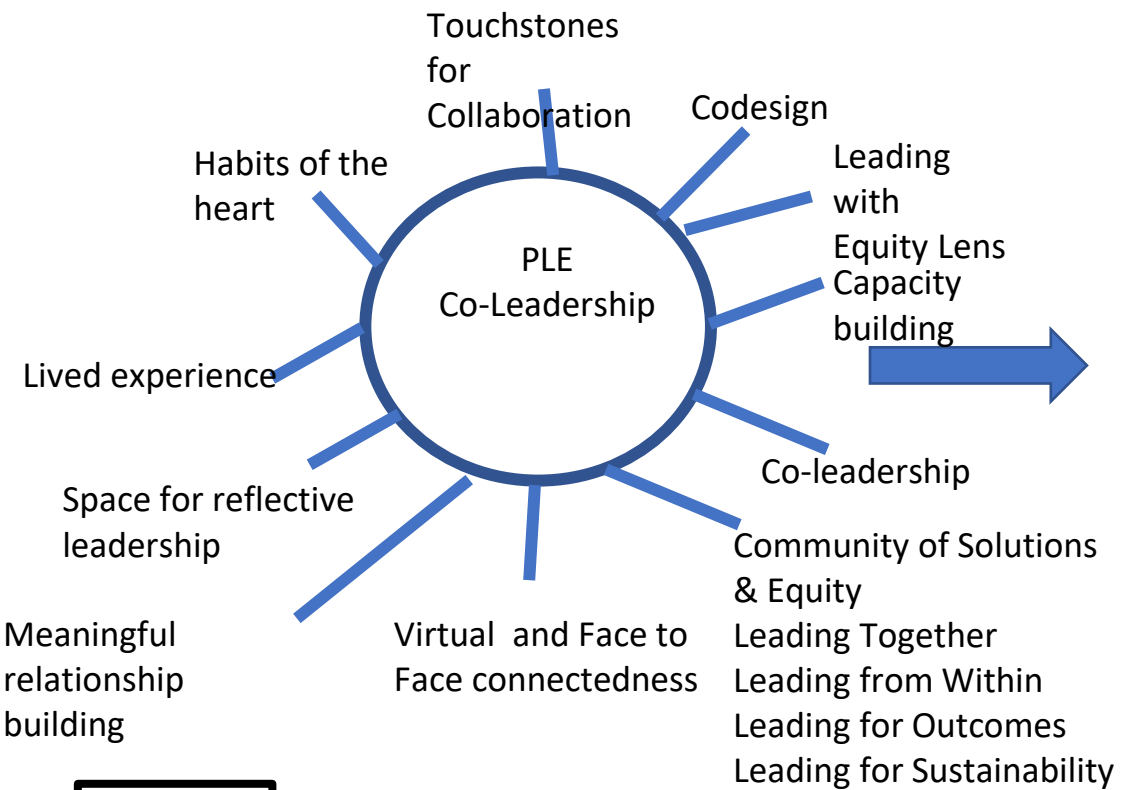


PEOPLE WITH LIVED EXPERIENCE INSTITUTE  
BECAUSE PEOPLE MATTER  
www.pleinstitute.org

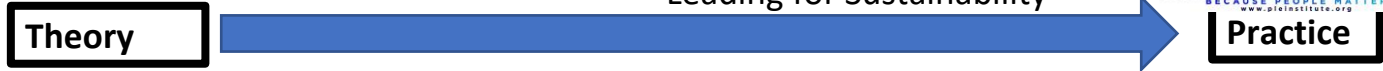


Citation: Rumala B.B., Coleman S.E., and Roary Y. (2020). People with Lived Experience Conceptual framework for engaging people with lived experience for systems transformation. People with Lived Experience Institute. [www.pleinstitute.org](http://www.pleinstitute.org)

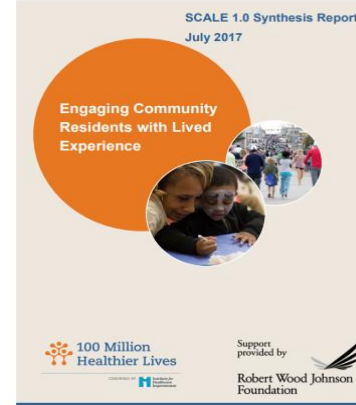
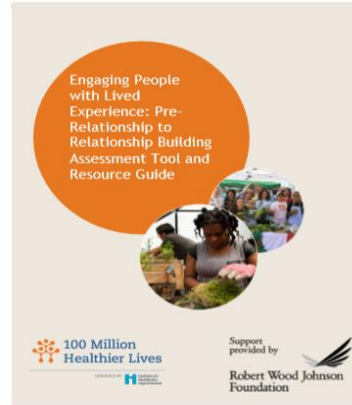
# PLE Conceptual framework for engaging people with lived experience for systems transformation



- Email Address – inclusive voice
- Group text - lived experience check in, collaborations, consensus, brainstorming
- Re-centering as a collective
- Co-design of agenda, meetings, emails, and PLE products
- Human Being Check-In
- Equitable Distribution of Resources
- Equitable Distribution of Leadership
- Individual and Collective voice
- Equitable Compensation Structure



# Additional References, Tools for Action, and Select Resources



## 3 Resources

1. Roary, Y., Rumala, B.B., Coleman, S.E., Knuckles, D., Turk, A., Glaze, E., Canedy C., FallCreek, S. Engaging People with Lived Experience of Inequity: Relationship Building. Implementation Guide. Cambridge, Massachusetts: Institute for Healthcare Improvement; 2019.
2. Rumala, B.B., Coleman, S.E., Roary, Y., Canedy C., Turk, A., Knuckles, D., Glaze, E., FallCreek, S. Pre-relationship to Relationship Building Assessment Tool and Resource Guide. Cambridge, Massachusetts: Institute for Healthcare Improvement; 2019.
3. Coleman S, Byrd K, Scaccia J, Stout S, Schall M, Callender S, Anderson J, Behrman N, Budnik A, Smith D, Brown L, Douglas W, Bussey R, McDermott E, Munene E, Mullin F, Hatchett L, Pohorelsky J, VanLanen T, Pairolero B, Mann Z. Engaging Community Members with Lived Experience. SCALE 1.0 Synthesis Reports. Cambridge, Massachusetts: Institute for Healthcare Improvement; 2017.